

Case Studies



Our Case Studies

Below is a selection of projects we're most proud of, each one chosen to showcase the breadth of our expertise. These case studies reflect work delivered across our current teams' present and past experience. For each, we've included it to highlight the skills, attention to detail, and collaborative delivery approach that we will bring to your project.



Titlarks

45,000 sqft Super Prime House

Set to the backdrop of rural Surrey, this 45,000m² luxury residential property is reflected on with pride by our team. Our remit was electrically biased, though it did include the BMS system, The elaborate AV system allowed our engineers to showcase their abilities, and the completed article was a stunning example of integration which offers the user accessibility and automation across their infrastructure which is befitting of the grand nature of this epic home



Titlarks - Specifications

45,000 sqft Super Prime House

- Mechanical & AV Infrastructure
- Lutron Lighting Installation
- Heating Control
- Fire & Security Infrastructure
- External Generator
- Power Distribution

Job Size: £2.2 Mil

Location: Virginia Waters

Completion Date: January 2020

Hatchford Estate

Historic Estate redevelopment to a 10,000 sqft super prime country residence, full M&E and AV systems. This property holds the record for most expensive per square foot in Surrey

Originally constructed in 1752, Hatchford Estate has undergone a significant and sensitive transformation, resulting in one of the most prestigious private residences in Surrey. The refurbishment included extensive alterations and a substantial new-build extension, seamlessly blending historic character with modern luxury.

The redevelopment scope comprised a guest lodge, staff accommodation, tennis court, swimming pool, rear office and guest suite complex, as well as external entertainment features such as perimeter audio systems around landscaped patio areas and a bespoke outdoor cinema.

KSQ2 was involved from inception through to completion, delivering a wide range of mechanical and electrical services across the estate. Our consistent presence ensured design continuity, technical precision, and smooth coordination with the broader project team.

Hatchford Estate continues to set the benchmark for high-end residential property in the region — currently holding the record for the highest £ per square foot achieved in Surrey.

No Images
Here Due
NDAs Signed

Hatchford Estate - Specifications

Historic Estate redevelopment to a 10,000 sqft super prime country residence, full M&E and AV systems. This property holds the record for most expensive per square foot in Surrey

- Mechanical Services
- Plant Room; Air Source Heat Pump
- Air Conditioning With Duct Work
- Lutron Lighting & Curtain System
- Full Home Automation System
- Wifi/Data Networks
- Security Wiring
- Cinema & Samsung
- Video Wall
- Various Out Buildings

Job Size: £0.897 Mil

Location: Cobham

Completion Date: September 2023

Wilton House

15,000 sqft Highend luxury residence

This luxurious estate features a stately, three-story residence set on an expansive, manicured lawn. The exterior showcases classic architectural elements with pristine white walls and elegant black accents, framed by mature trees and landscaped greenery. High quality with balance and precision.



Wilton House - Specifications

15,000 sqft Highend luxury residence

- Full M&E installation
- Fire system
- Security system
- AC and MVHR
- AV system
- Lutron Lighting
- Cinema
- Plantroom
- Underfloor heating
- BMS system
- External lighting and power

Job Size: £650 k

Location: St. Georges Hill

Completion Date: October 2018

Whitley Hotel

The first 6* luxury hotel in the UK

The Whiteley's project comprised the UK's first 6* hotel located in the historical Whiteley's department store in Bayswater, London. Our team were instrumental in the mechanical and electrical systems throughout the 108 room hotel development, including the grand foyer, spa and pool along with the full back of house service areas. The intricate mechanical, building management, fire alarm and security systems were required to interface with those of the retail and apartment buildings adjacent, all of which required our team's expert input and management to facilitate. The building, now complete, represents a stunning merger of classic and contemporary design which will provide a therapeutic stay to please visitors from all walks of life



Whitley Hotel - Specifications

The first 6* luxury hotel in the UK

- Mechanical Services
- 108 Guestrooms
- Hot & Cold Pipework To Fan Cool Units
- Domestic Hot & Cold
- Above Ground Drainage
- Corridor Pipework

Job Size: £1.1 Mil
Location: Bayswater
Completion Date: June 2023

Upper Court

High end care home consisting of 2 separate buildings on site

This high-end residential care home was a full MEP project that was delivered across two phases. Our team provided considered and diligent management of their engineers and all involved collectively produced an outstanding finish for future residents to enjoy throughout their autumn years. The soft lighting and warm interior décor compliment this historic building in such a way that designers and installers could all reflect with a sense of pride for an outstanding build and excellent finish.



Upper Court - Specifications

High end care home consisting of 2 separate buildings on site

- 70 Bedrooms
- 2 Plant Rooms; Ground source heat pumps
- M&E
- Fire Safety
- Wifi/Data Network
- Commercial Kitchen
- Nurse call
- Renewables
- Car Park Lighting
- Car Park EV Charging

Job Size: £1.85 Mil

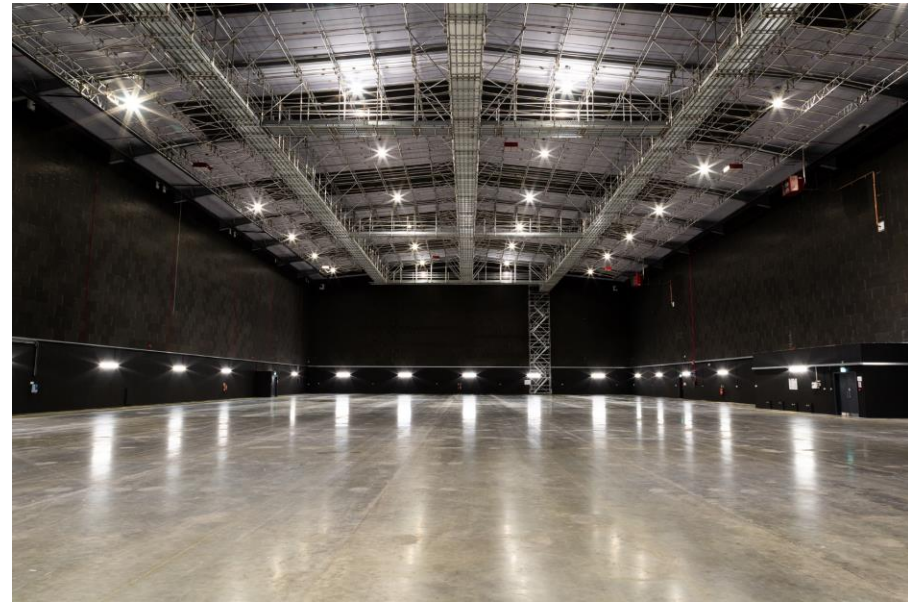
Location: Esher

Completion Date: June 2024

OMA X

213,000 sqft warehouses converted into TV Studios and additional 50,000 sqft office space on the same site

The OMA X project saw the transformation of 213,000 sqft of warehouse space into purpose-built TV studios, with an additional 50,000 sqft of office accommodation delivered on the same Enfield site. Our team played a key role in delivering the full mechanical and electrical scope for this high-spec conversion, including electrical distributions to stage areas, red light systems, heating control, panel boards, and power distribution. We also delivered integrated fire alarm and security access control systems across the site. Designed to meet the complex requirements of film and television production, the completed facility blends robust technical infrastructure with functional studio environments, ensuring reliability and performance at every level



OMA X - Specifications

213,000 sqft warehouses converted into TV Studios and additional 50,000 sqft office space on the same site

- Electrical Distributions To Stages
- Red Light System
- Heating Control
- Fire & Security Access Control
- Panel Board
- Power Distribution

Job Size: £1.6 Mil

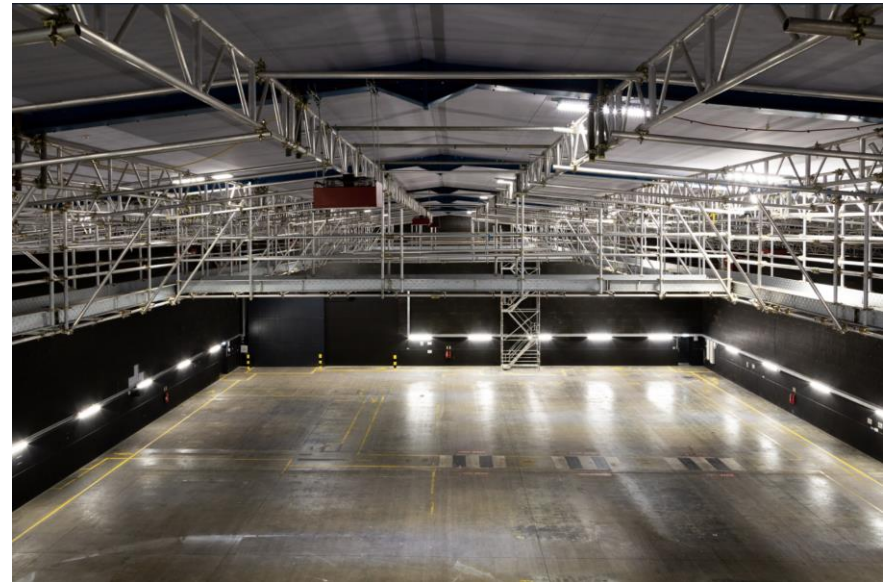
Location: Enfield

Completion Date: December 2021

OMA One

119,000 sqft warehouse converted into TV Studios across a 6.5 acre site

OMA One encompasses 119,000 sqft of sound stages, workshops, and production offices on a secure 6.5-acre site. It features 4 fully soundproofed stages totaling 87,500 sqft, with the largest being 29,000 sqft. Additionally, there are 18,965 sqft of workshops and stores, 12,500 sqft of production office space, 95 parking bays, and 62,000 sqft of secure yard space. The sound stages range from 16,500 sqft to 29,000 sqft, with minimum working height clearances of 29-35 ft



OMA One - Specifications

119,000 sqft warehouse converted into TV Studios across a 6.5 acre site

- Electrical Distributions To Stages
- Red Light System
- Heating Control
- Fire & Security Access Control
- Panel Board
- Power Distribution

Job Size: £1.2 Mil

Location: Enfield

Completion Date: April 2020

Wycliffe Gallery

Professional art gallery for high end private events

Located in the Surrey suburbs, the Wycliffe galleries is a project that would enhance any portfolio. Our team assisted with the design of this project, including the lighting design and AV systems. The lighting system is the fundamental element of this project, as can be seen by each and every visitor, accentuating each space and dressing each display with the perfect lux level and colour temperature. The systems are integrated, allowing one touch control of ambience in lighting, audio and visual systems ambience to an aesthetics reliant business. Warm & cold lighting was used to make the art pop



Wycliffe Gallery - Specifications

- Control 4 lighting system
- Iluma tracking lighting
- Power Distribution

Job Size: £100 k
Location: Cobham
Completion Date: June 2017